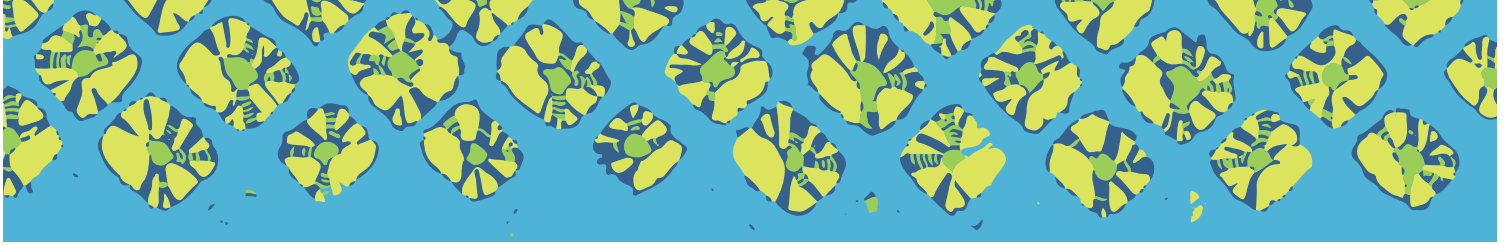


Supporting governments
to build visionary and
effective teams



AMP HEALTH



About AMP Health

AMP Health supports governments to build visionary and effective teams. We are committed to the vision of a world where governments and societies prioritise, promote, and protect people's health and well-being. Governments play a critical role in addressing complex problems and bringing this vision to reality, which is why we work with public sector teams to help them develop the leadership and management capabilities needed to achieve ambitious goals.

“There is no doubt that AMP Health’s partnership is contributing to public health in Ghana. The core of our work is the delivery of Primary Health Care in the country, and the development of leadership has a direct impact on that.”
– Dr. Koku Awoonor-Williams, Former Director, Policy, Planning, Monitoring and Evaluation Division, Ghana Health Service.

It starts with better teams

We believe that teams are at the heart of a government’s ability to deliver quality services. Talented individuals cannot thrive within institutions that confine them. The best policies cannot lead to meaningful change without the backing of a competent team that can execute on them. But teams – small groups of dedicated, capable people – have the power to do extraordinary things.

“One thing I appreciate about the AMP Health partnership is that it is focused on supporting teams, and making sure they are able to work together as a collective force.”
– Dr Andrew Silumesii, Director of Public Health, MoH, Zambia.

Our approach

We combine embedded mentoring and capability development; experiential learning through interactive in-person and online training; executive coaching; curated self-directed learning; and peer exchange across countries to build highly effective public sector teams. We catalyse durable behaviour change by creating opportunities for our partners to learn by doing.

Our results

The teams we work with develop deeper levels of trust. They become better communicators, and put systems and tools in place that allow them to be more effective. They become better managers and more confident leaders who contribute to stronger, more resilient health systems.

Feedback from our government partners



say that the AMP Health Leadership & Management (L&M) Programme is helping their teams.



have seen an improvement in their individual L&M skills.



say that L&M training has improved their ability to make a significant contribution to their team.

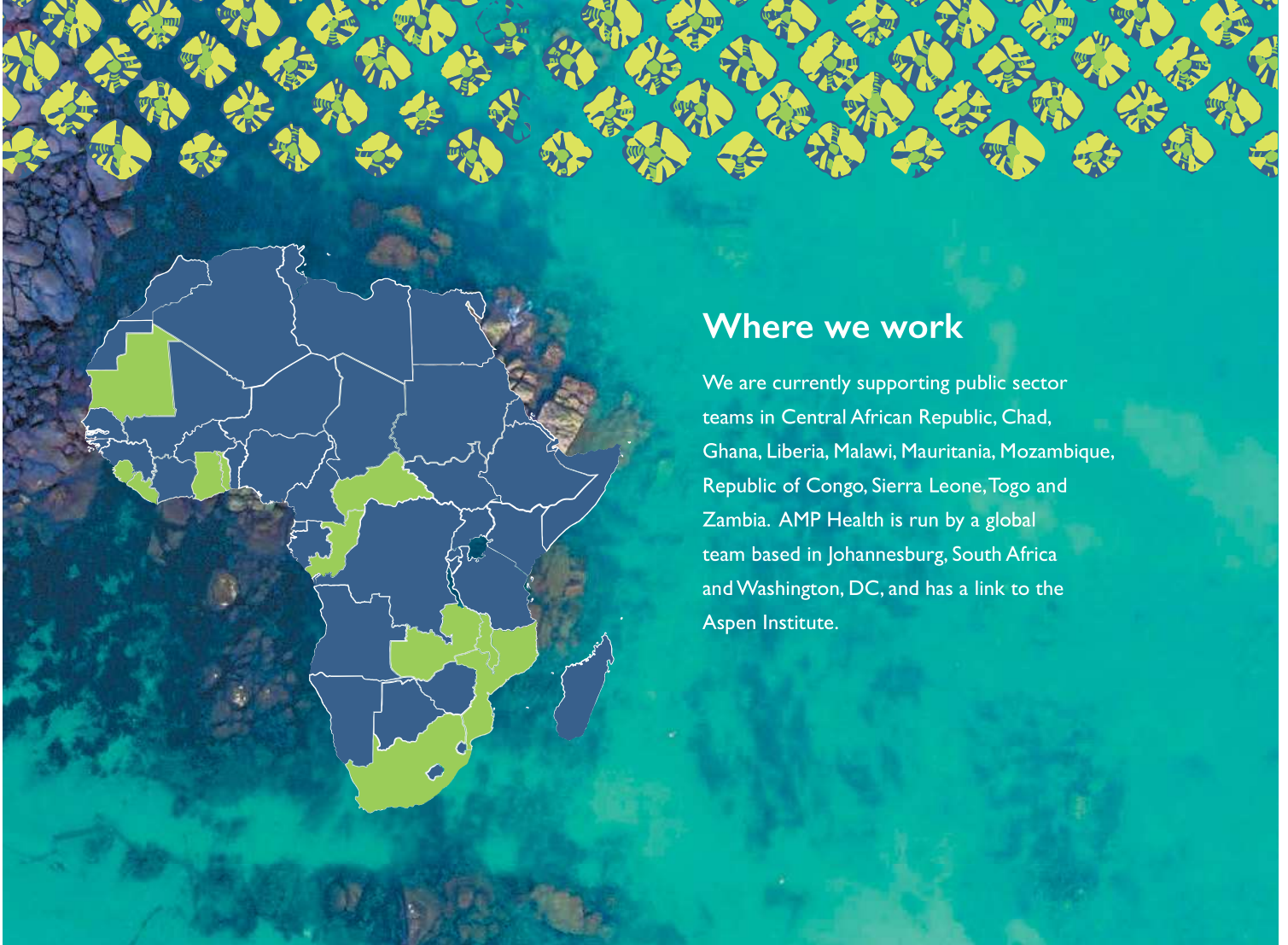


stated that L&M training is improving their ability to make significant contributions to public health in the country.



noted that their teams have become more effective.

“AMP Health’s support has made a big impact on how we see our jobs. Public Health is not only about the technical aspects of health service delivery. It is also about the attitude and behavioural changes that must happen in order to make a real and lasting impact.”
– Hwanatu Kamara, Community Health Team, MoH, Sierra Leone.



Where we work

We are currently supporting public sector teams in Central African Republic, Chad, Ghana, Liberia, Malawi, Mauritania, Mozambique, Republic of Congo, Sierra Leone, Togo and Zambia. AMP Health is run by a global team based in Johannesburg, South Africa and Washington, DC, and has a link to the Aspen Institute.

Our partners

- Community Health Acceleration Partnership
- CRI Foundation
- Doris Duke Charitable Foundation
- Helmsley Charitable Trust
- Hewlett Foundation
- Horace W. Goldsmith Foundation
- LGT Venture Philanthropy
- Merck for Mothers
- Partnership for Influenza Vaccine Introduction (PIVI)
- Pfizer
- UBS Optimus Foundation
- USAID
- STAR (Public Health Institute)
- Vitol Foundation





Contact us:

Want to find out more about us, the work we do or how you can partner with us?

Email: info@amphealth.org

Website: www.amphealth.org

Twitter: [@AMPforHealth](https://twitter.com/AMPforHealth)

LinkedIn: [AMP Health](https://www.linkedin.com/company/amp-health)